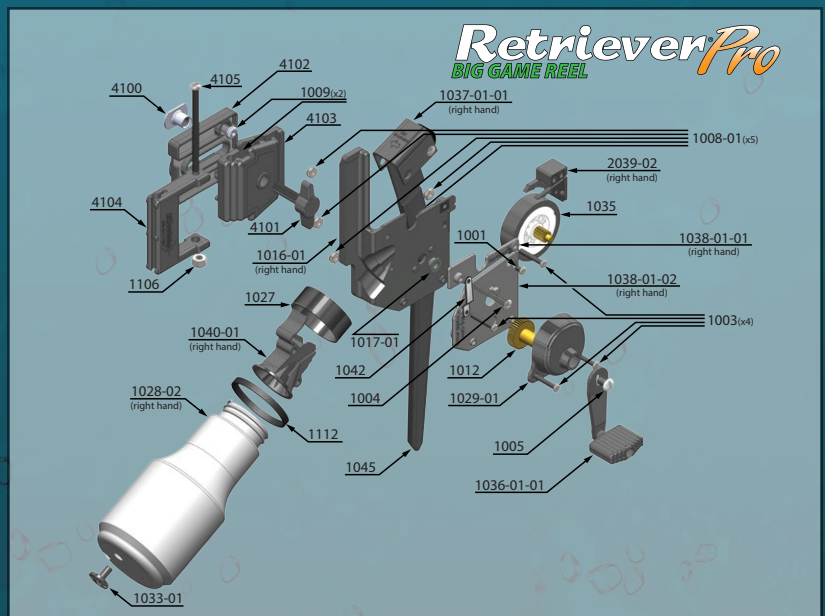
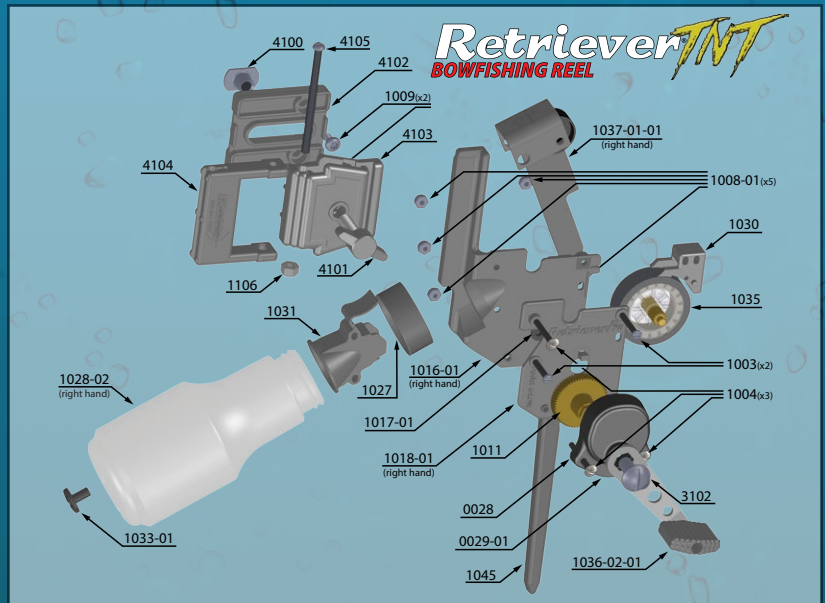
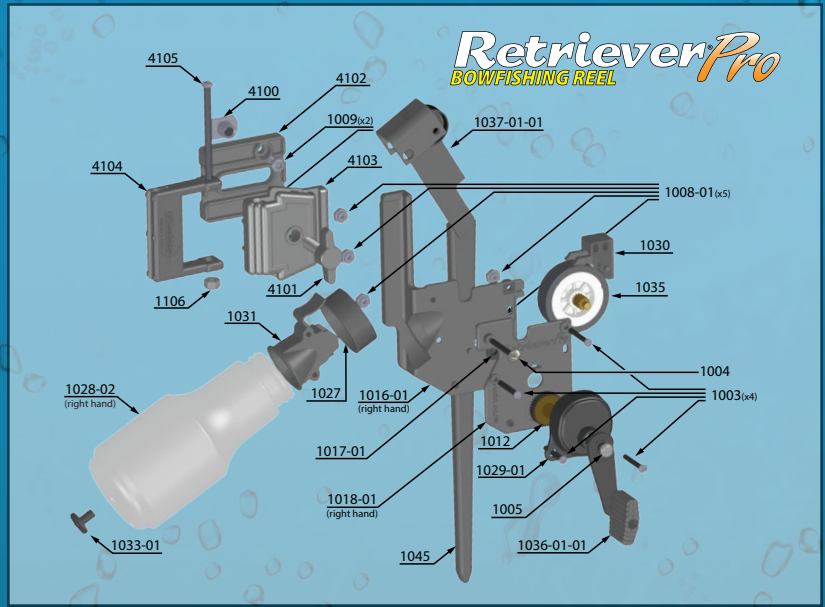


# AMS Retriever Assembly

## AMS Retriever® Assembly

- Tools: Flat screw driver, 5/16" box wrench & marine grease
- » See parts diagram to define parts

1. Push lock nuts (1008) into the back side of the mount plate (1016).
2. Place pinion bearing (1017) into mount plate, aligning small notch.
3. Grease both ends of the rubber drive roller (1035) and place the small end into the pinion. Excessive grease is not necessary.
4. Place line guide (1030) on the mount plate with the legs over the rubber drive roller.
5. To assemble gear cover: place gear cover (1029) over brass drive gear (1012), add handle (1036) and secure pieces together with the truss screw (1005). If you have a TNT Retriever you will also need to install the lower gear cover snap.
6. Locate the small snap above the center hole on the side plate (lower side plate for Big Game Retrievers). Place gear cover assembly over it and slide it downward toward the bottom of the reel until it snaps onto the side plate.
7. Add side plate assembly to mount plate assembly. The two holes in the gear cover snap over the posts on the side plate. Secure with 1" screws (1003) at the bottom.
8. If you have a Big Game Retriever attach the upper side plate over the line guide.
9. Add the line guide screw (1003). Secure with a lock nut but do not tighten completely as it will be adjusted later.
10. Install trigger assembly (1037) by squeezing the mount and side plates together and pushing it onto the built-in trigger bushings.
11. Assemble stripper (1031) and bottle cap (1027) by squeezing the cap slightly.
12. Push stripper/bottle cap between plates.
13. Big Game Retrievers will also need the stainless steel trigger strap installed with the small flat down and against the lower side plate.
14. Align the holes in the trigger with the stripper and plates. Add the 1 1/4" screw (1004) through the trigger. Do not tighten yet as it will be adjusted later.
15. Add 1" stripper screw (1003) but do not tighten.
16. **IMPORTANT!** Adjust the stripper and line guide before use. Follow link below to view Retriever Adjustment Instructions.



**Retriever Adjustment Instructions**